



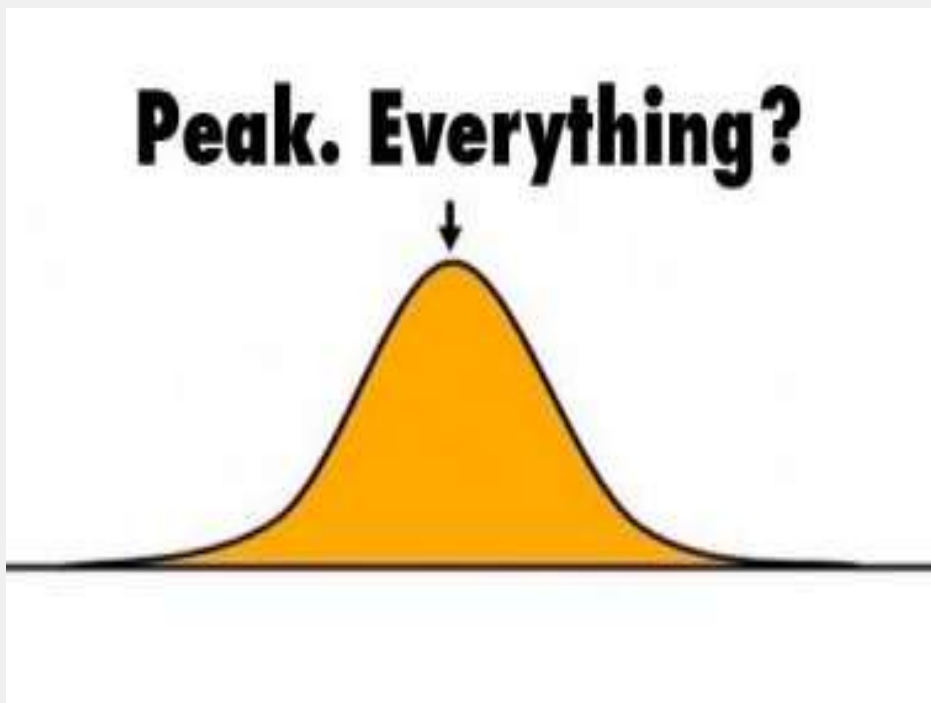
bruxelles
environnement
.brussels 

Gestion écologique des espaces verts

Julien Ruelle
Division Espaces verts
Service Plan nature

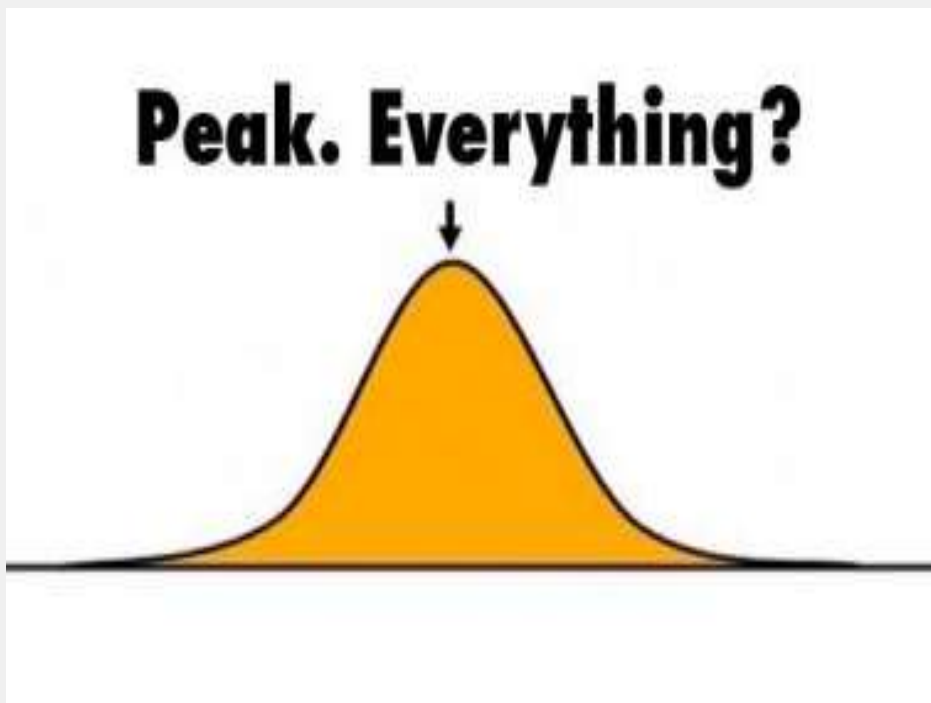


DÉFIS



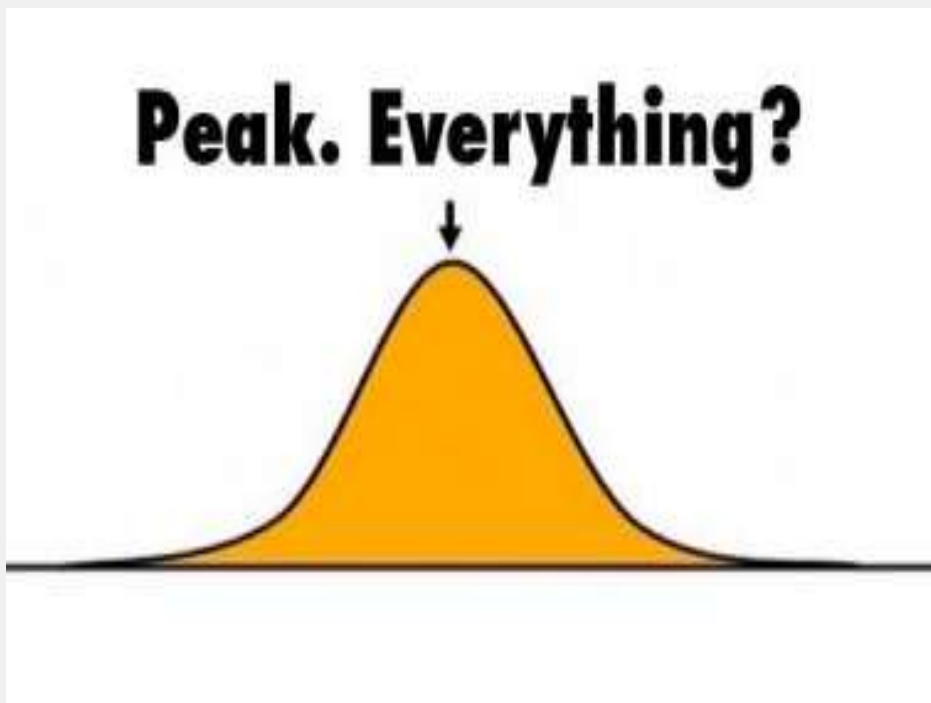
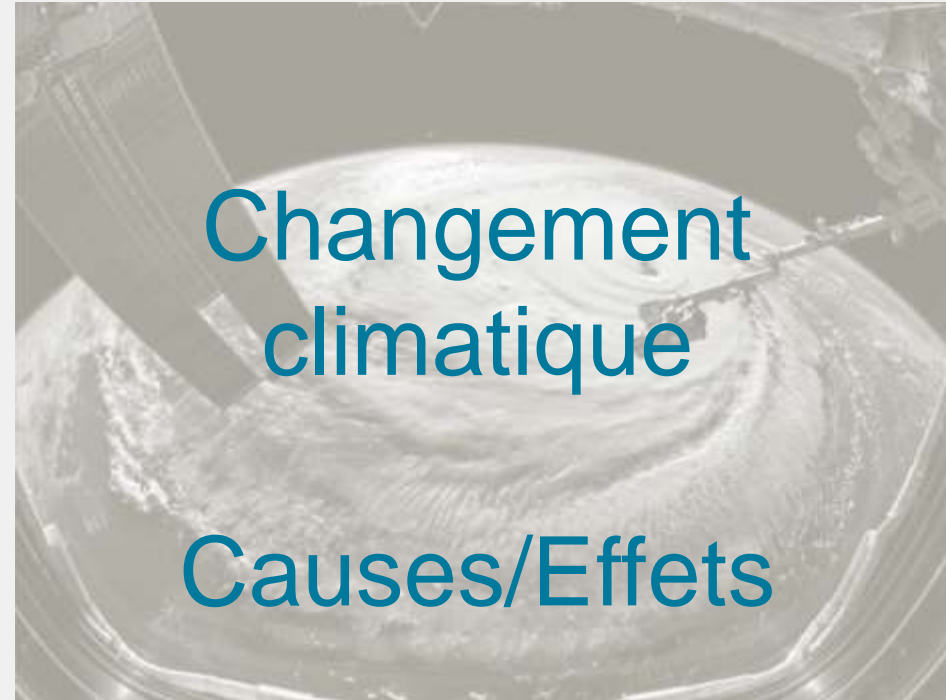


DÉFIS



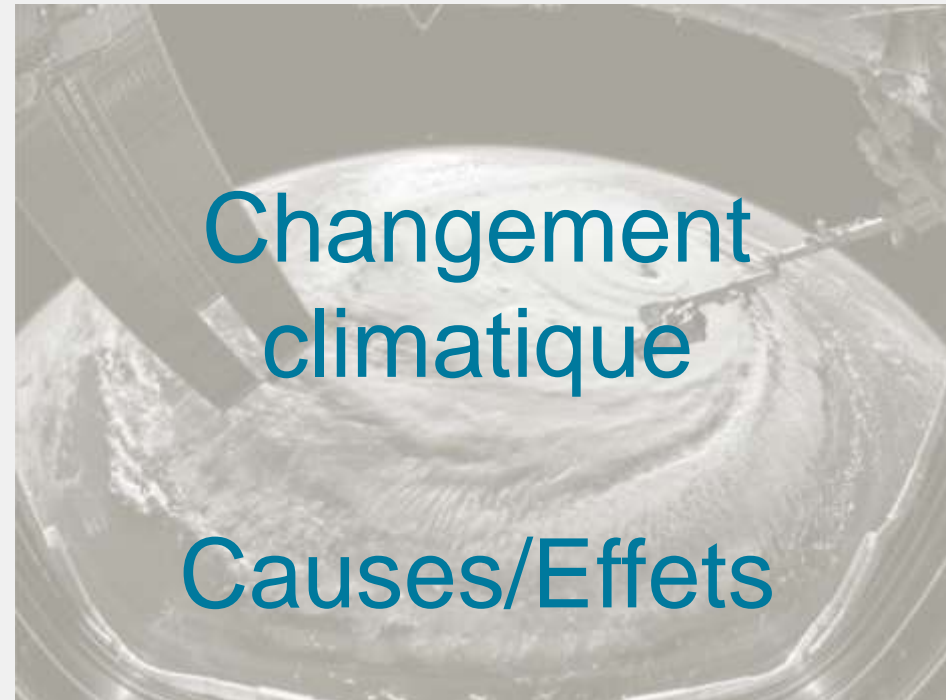


DÉFIS



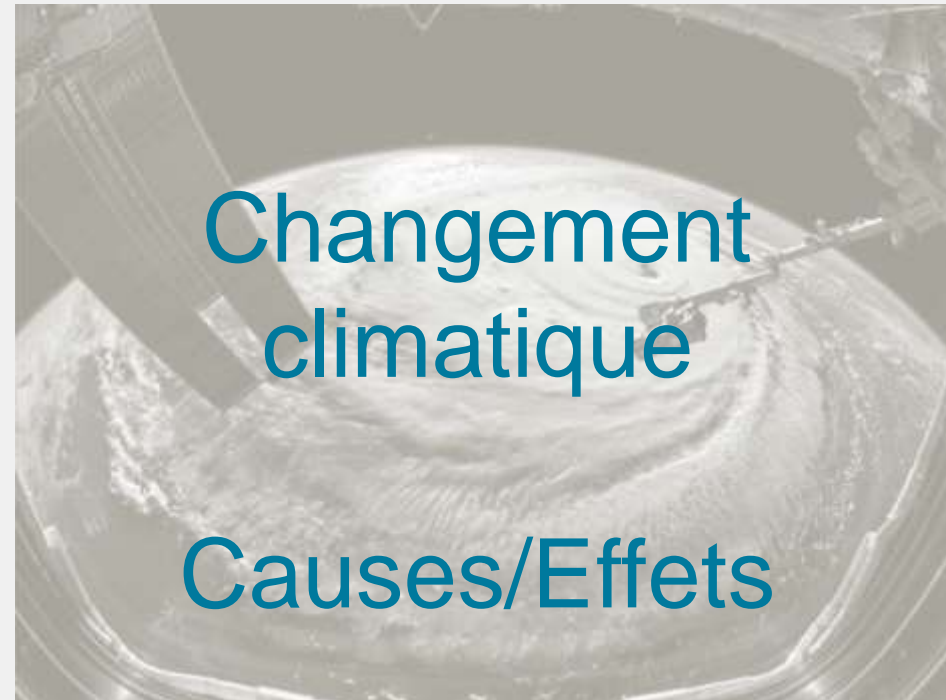


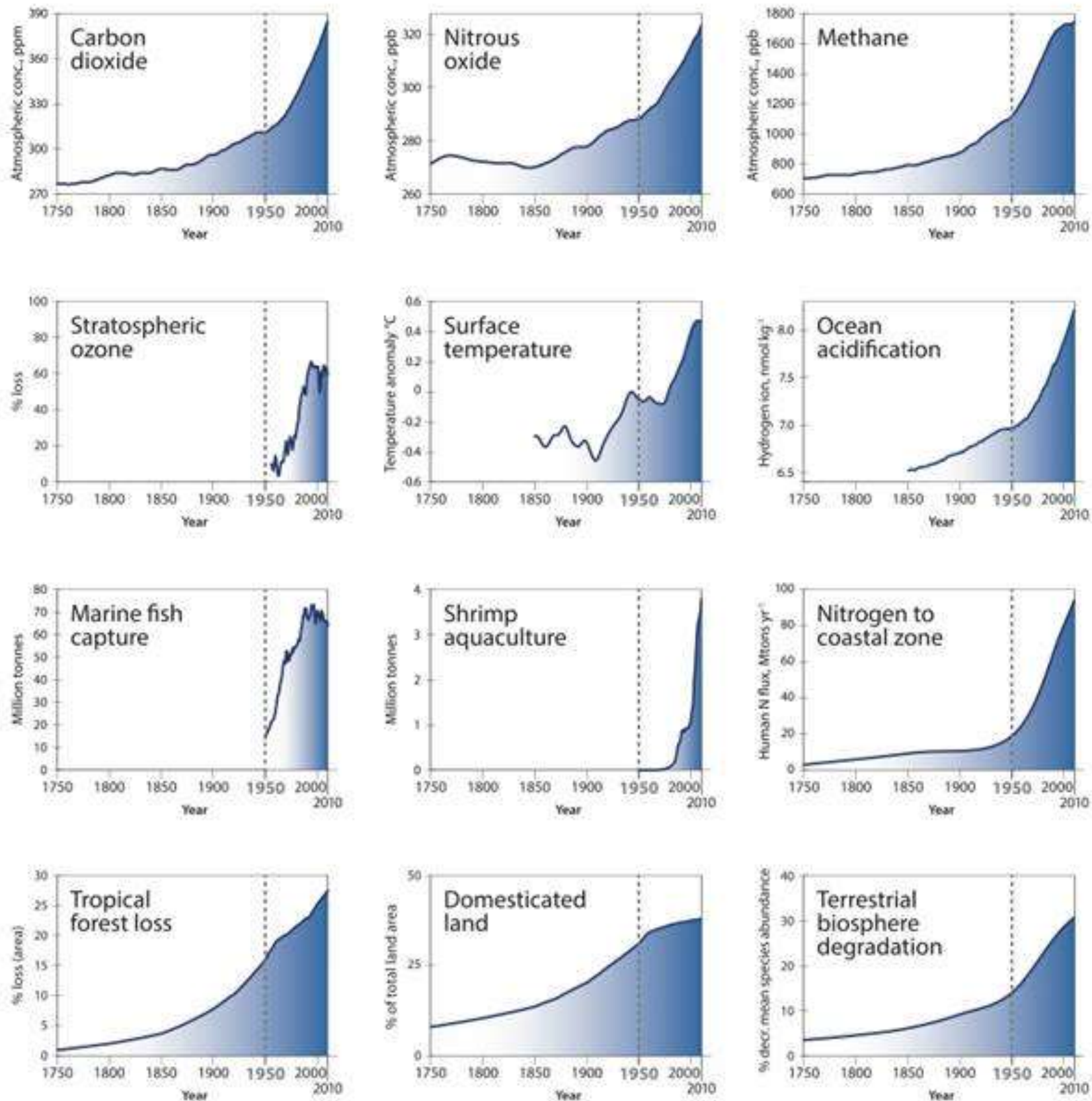
DÉFIS



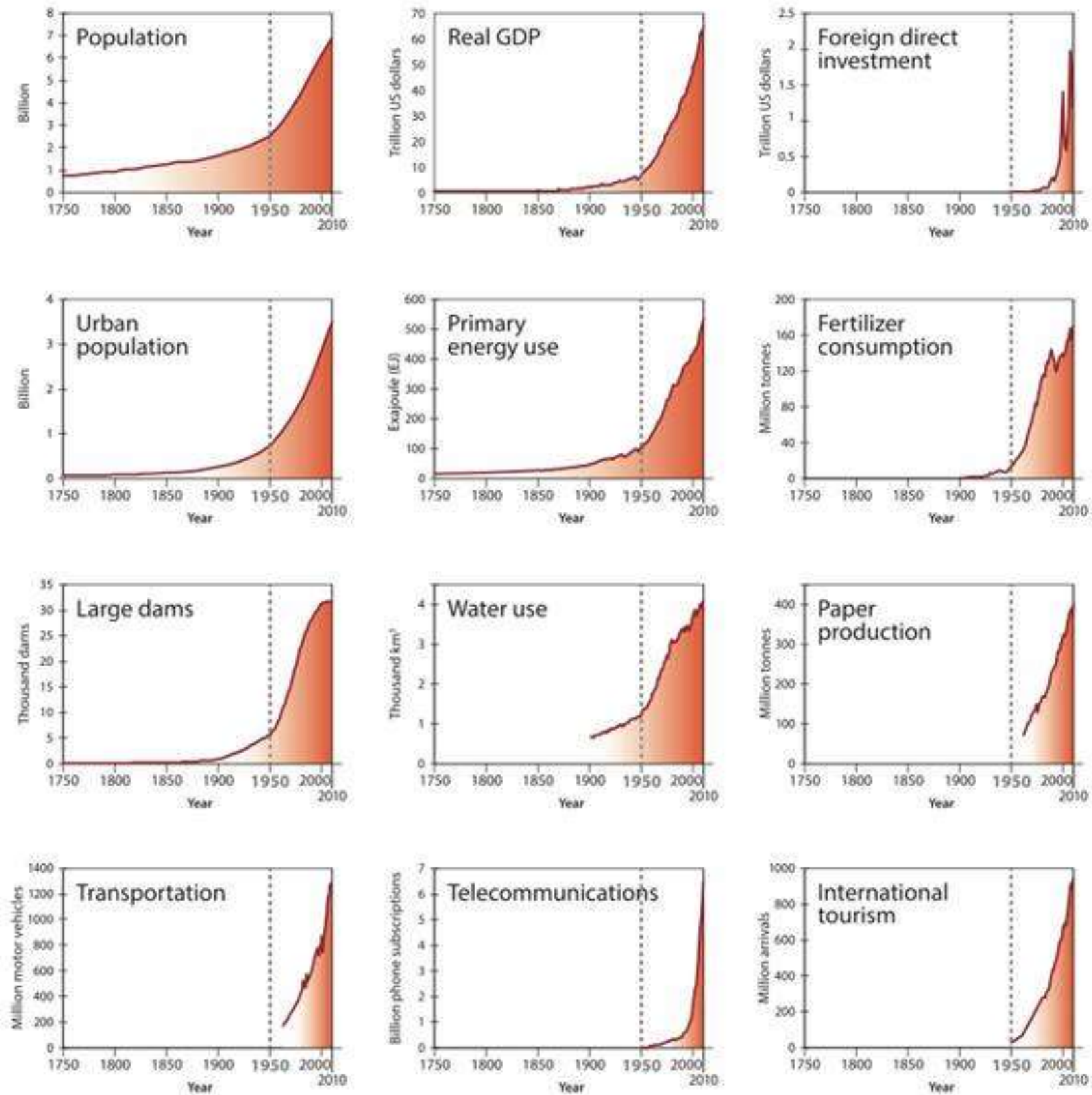


DÉFIS

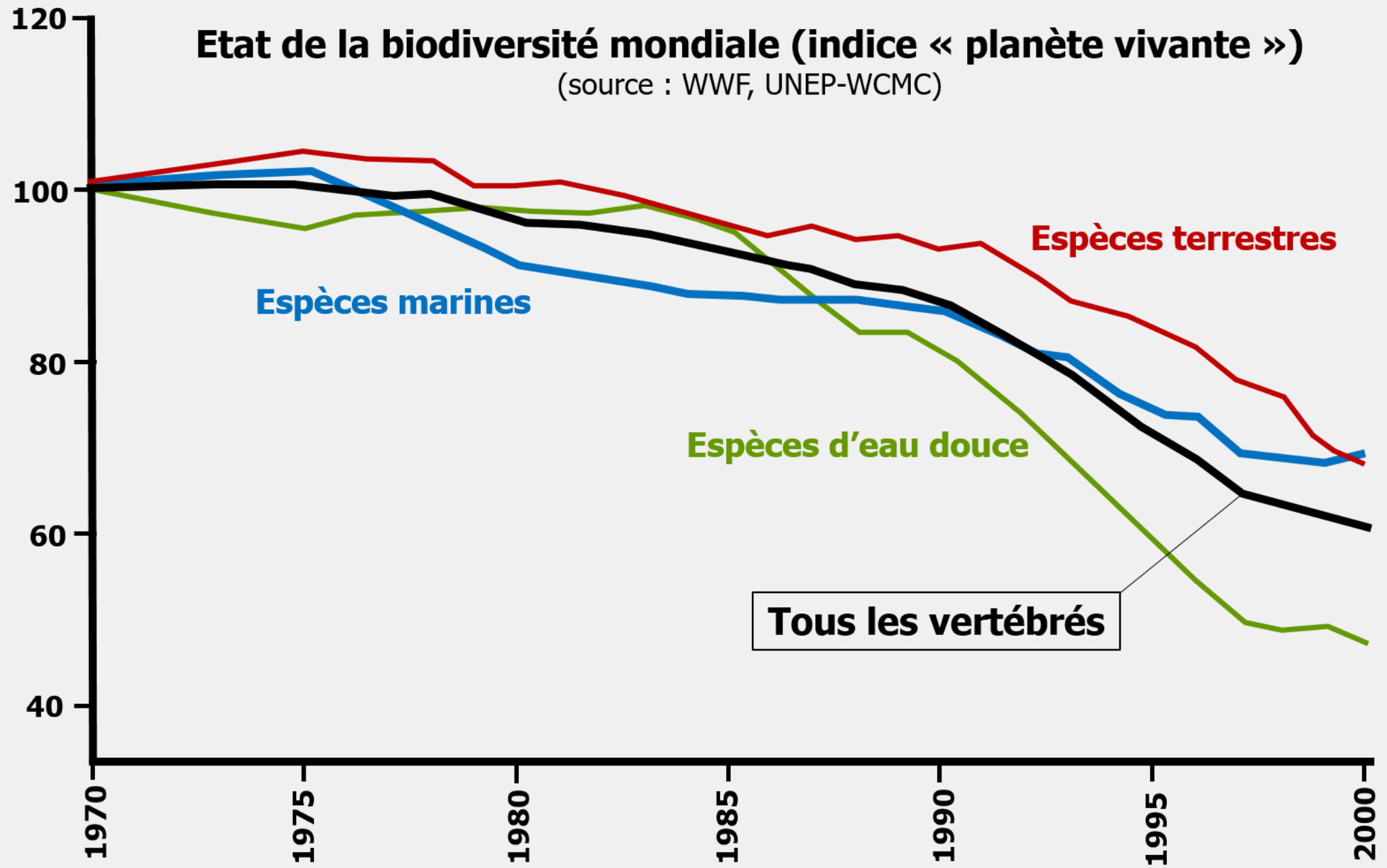




Trends from 1750 to 2010 of the 12 indicators of the Earth system, part of what has been dubbed the "Great Acceleration graphs". Source: Steffen et al. (2015)

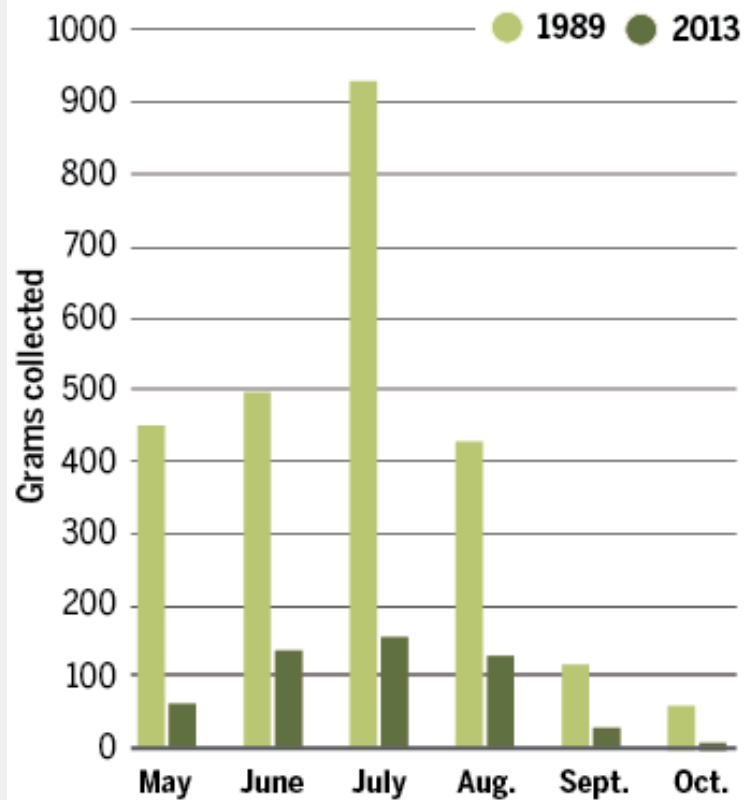
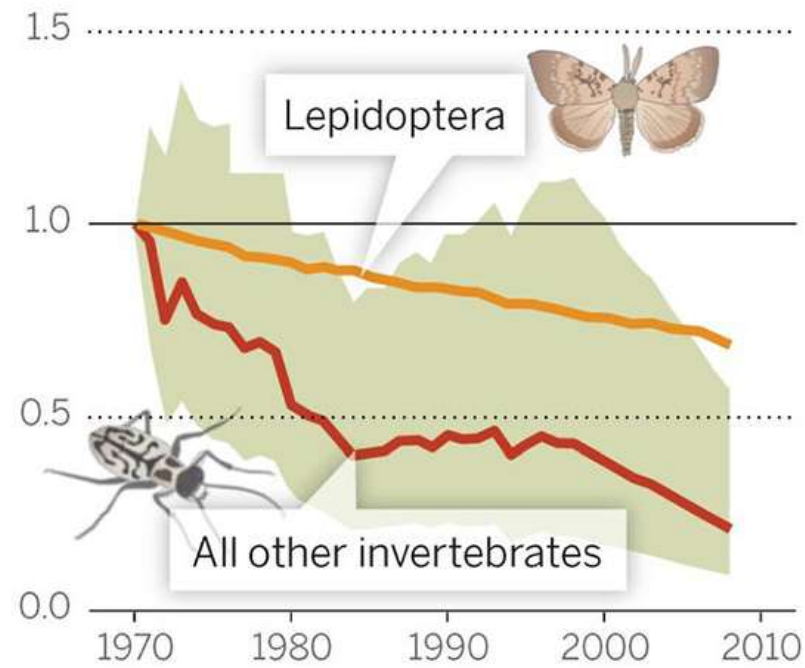


Trends from 1750 to 2010 of the 12 indicators of the socioeconomic system, part of what has been dubbed the "Great Acceleration graphs". Source: Steffen et al. (2015)

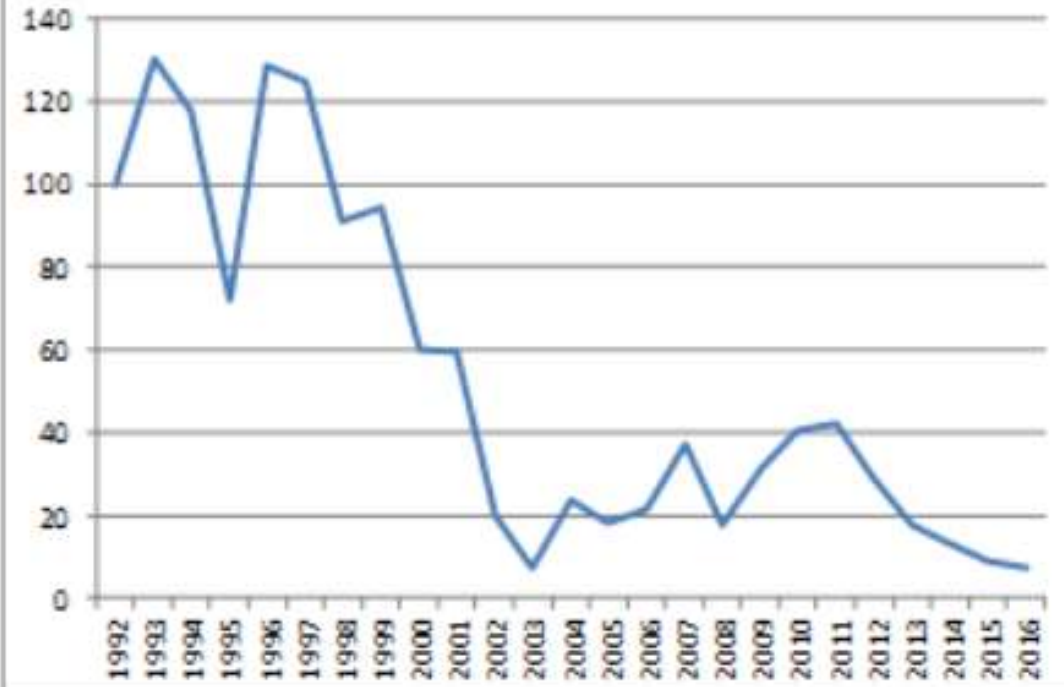




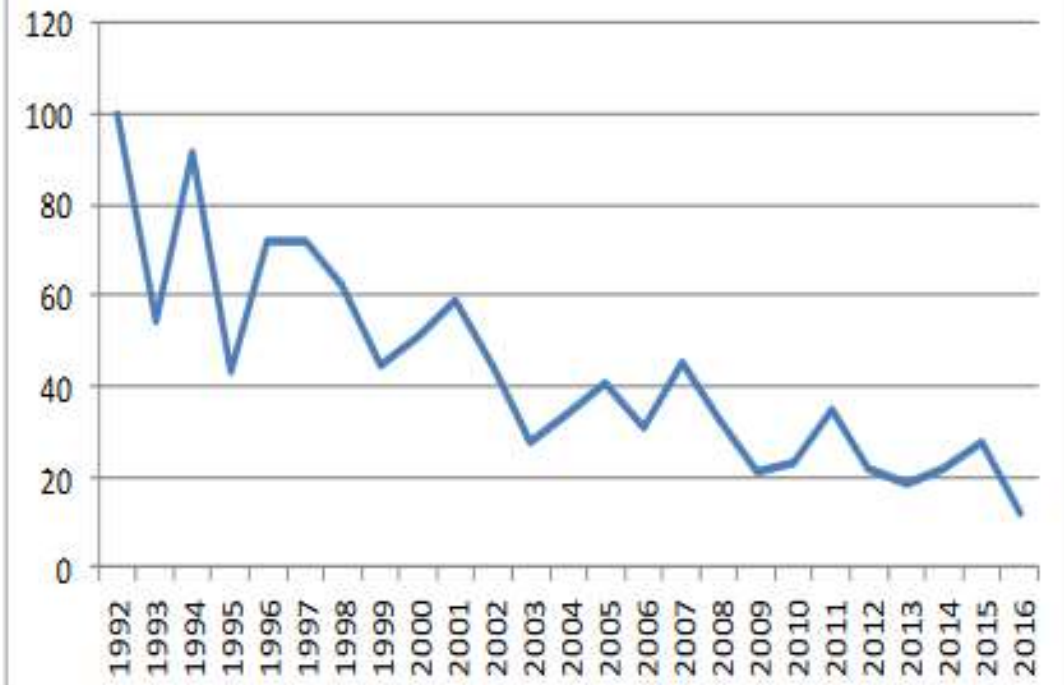
Global index of invertebrate abundance



Moineau domestique, *Passer domesticus*



Etourneau sansonnet, *Sturnus vulgaris*





OBJECTIFS





OBJECTIFS





OBJECTIFS





OBJECTIFS





OBJECTIFS



Reconnexion



« Renaturation »



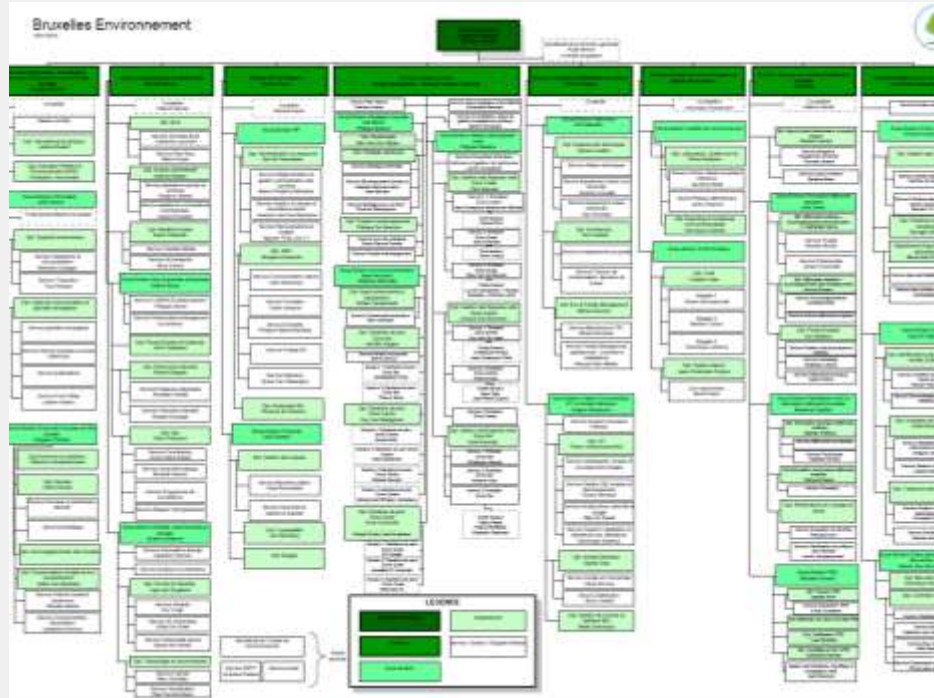
Qualification



Valorisation



FREINS



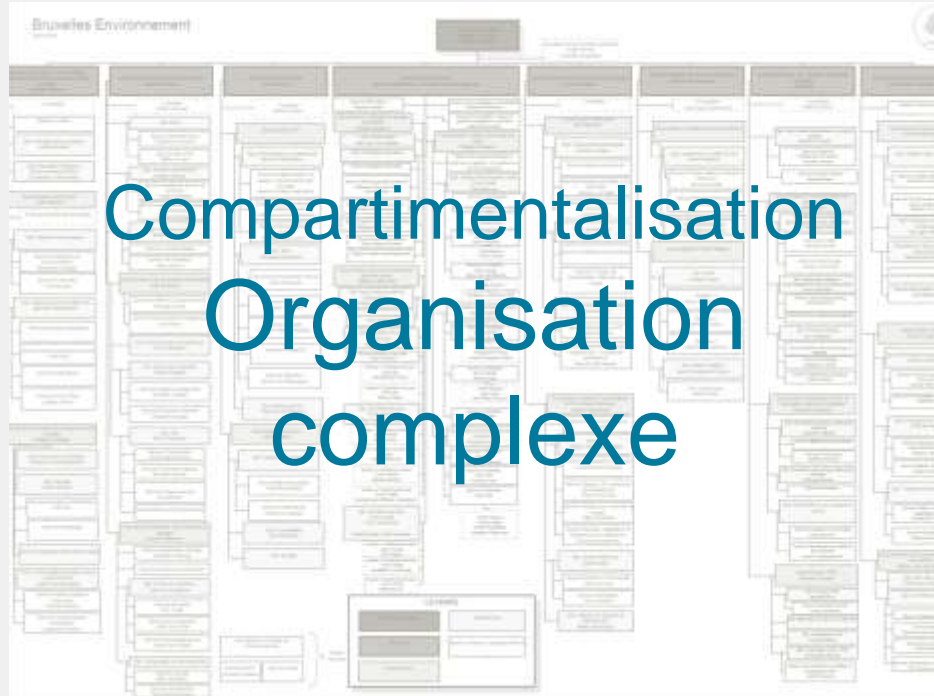


FREINS





FREINS



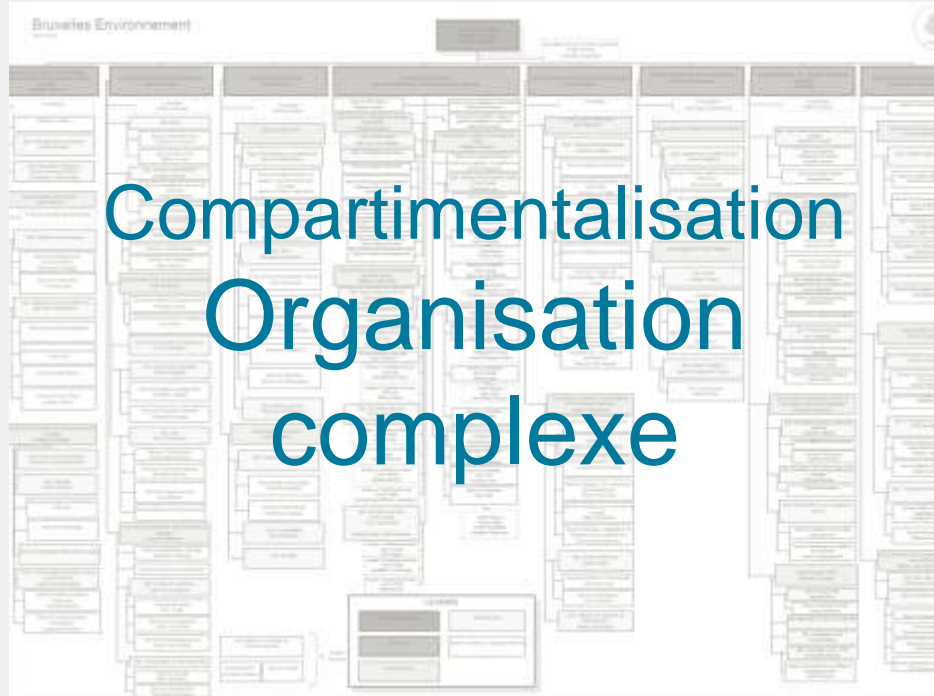


FREINS



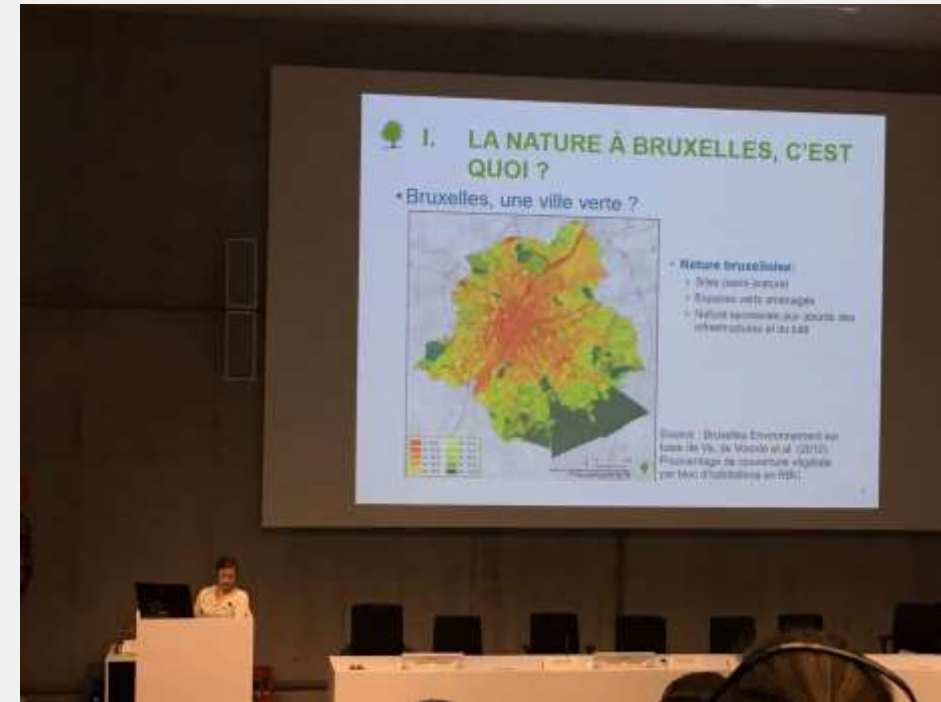


FREINS





GESTION ÉCOLOGIQUE

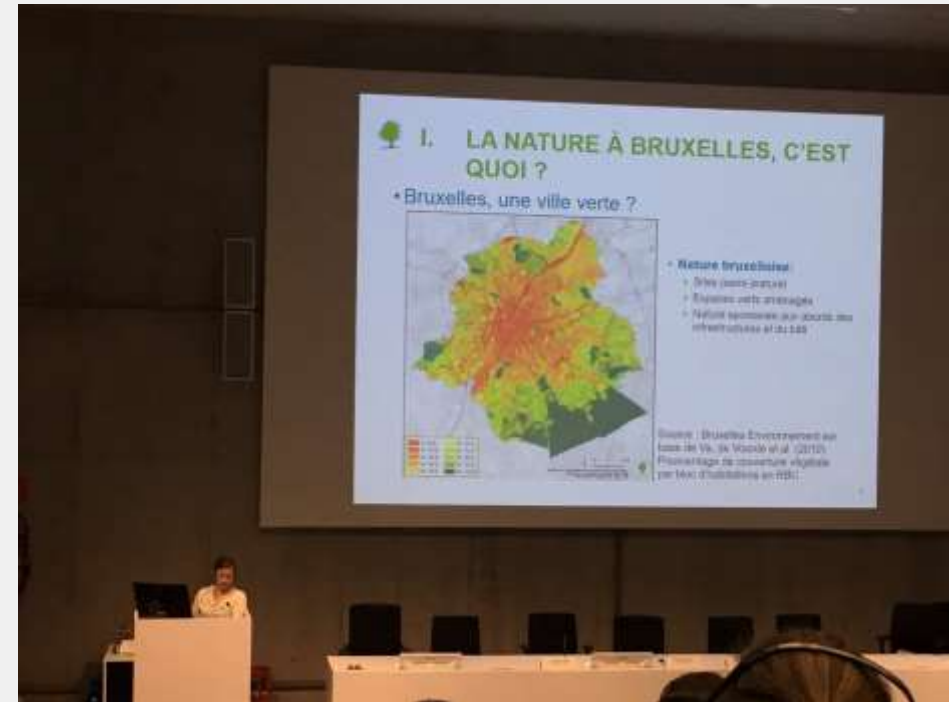




GESTION ÉCOLOGIQUE



- Définir la gestion écologique
- Fixer le « niveau de base »
- Détailler les bonnes pratiques
- Proposer des clauses techniques





GESTION ÉCOLOGIQUE




Formations initiales
Formation continue
Examens régionaux Phytolice



GESTION ÉCOLOGIQUE

Facilitateur Nature

nature@environnement.brussels



Plateforme des gestionnaires publics
Outils de communication vers les professionnels
Étude 'Hortésie' sur les attentes liées aux jardins privés
Réseau de surveillance des ravageurs
Labellisation des entreprises

...



bruxelles
environnement
.brussels 

02 775 75 75 · WWW.ENVIRONNEMENT.BRUSSELS

Lorem ipsum dolor sit amet consectetur. Proin justo lacus, commodo quis felis iaculis, cursus molestie enim. Proin leo augue, volutpat vitae